

## The Vineyards

- |                                  |                                    |                                    |
|----------------------------------|------------------------------------|------------------------------------|
| <b>1</b> Three Amigos Vineyard   | <b>4</b> Capa Vineyard             | <b>7</b> Wilding Farm              |
| <b>2</b> The SLD Estate Vineyard | <b>5</b> OSR Vineyard              | <b>8</b> Wilding Building Downtown |
| <b>3</b> Vandal Vineyard         | <b>6</b> Scintilla Sonoma Vineyard |                                    |

### *Regeneratively Farmed Since 1991...before there was a name for it!*

Regenerative farming is like giving the Earth a big hug while growing crops. Instead of just taking from the soil, it's about giving back too. Since the early '90s, RSVnapa has been using beneficial agriculture practices to encourage natural processes to help our soil get better. By taking care of the soil and surrounding environment, regenerative wine farming can produce better-tasting grapes while being kinder to the planet.

The new Wilding Farm is our back-to-the-future experiment that will utilize the old school methods of diversified, organic, biodynamic and regenerative farming techniques while embracing bleeding edge technology that will help us reduce our footprint while improving the soil and natural habitat.

# ROBERT SINSKEY VINEYARDS



## *Three Amigos Vineyard: Amigo I (est. 1982) Total Acreage: 17.53 Planted Acreage: 15.11*

Influenced by its proximity to the San Pablo Bay, the Three Amigos Vineyard is one of RSV's coolest locales and encompasses three adjacent vineyards with clay loam soil located off Las Amigas Road in Los Carneros. The Amigo I Vineyard is also home to RSV's olive orchard and over 40 fruit and nut trees.

PARCEL	VARIETY	CLONE/SELECTION	ROOTSTOCK	SPACING	ACRES	TOTAL VINES
<b>234</b>	Merlot	181	3309C	8x4	4.19	5700
<b>241 459</b>	Pinot Noir	459	1103P	8x5	1.78	1934
<b>241 115</b>	Pinot Noir	Dijon 115	1103P	8x5	1.79	1957
<b>241 12</b>	Pinot Noir	Pommard UCD 12	1103P	8x5	1.85	1983
<b>242 M&amp;H</b>	Pinot Noir	"M&H" Massal Heirloom Selection	3309C	8x5	2.43	2648
<b>242 538</b>	Pinot Noir	538	3309C	8x5	2.61	2837
<b>271</b>	Pinot Blanc	ENTAV 54	1103P	8x4	.46	558

# ROBERT SINSKEY VINEYARDS



## ***Three Amigos Vineyard: Amigo 2 (est. 1982) Total Acreage: 27.55 Planted Acreage: 22.05***

Influenced by its proximity to the San Pablo Bay, the Three Amigos Vineyard is one of RSV's coolest locales and encompasses three adjacent vineyards with clay loam soil located off Las Amigas Road in Los Carneros.

PARCEL	VARIETY	CLONE/SELECTION	ROOTSTOCK	SPACING	ACRES	TOTAL VINES
<b>843</b>	Pinot Noir	4	101-14	8x4	2.01	2737
<b>844</b>	Pinot Noir	"1" Heirloom Massal Selection	1103P	8x5	3.71	4036
<b>845</b>	Pinot Noir	538	1616C	8x4	3.44	4416
<b>846North</b>	Pinot Noir	VCR 18	3309C	8x5	2.4	2620
<b>846South</b>	Pinot Noir	459	1616C	8x5	2.52	2750
<b>871</b>	Pinot Blanc	ENTAV 54	3309C	8x4	2.02	2755
<b>881</b>	Pinot Gris	INRA 52	1103P	8x4	4.55	6195
<b>882</b>	Pinot Gris	INRA 52	101-14	8x4	1.32	1797

**Reservoir:** Existing when property was purchased in 1982. Capacity 11 acre-feet

# ROBERT SINSKEY VINEYARDS



## *Three Amigos Vineyard: Amigo 3 (est. 1982) Total Acreage: 26.17 Planted Acreage: 20.01*

Influenced by its proximity to the San Pablo Bay, the Three Amigos Vineyard is one of RSV's coolest locales and encompasses three adjacent vineyards with clay loam soil located off Las Amigas Road in Los Carneros.

PARCEL	VARIETY	CLONE/SELECTION	ROOTSTOCK	SPACING	ACRES	TOTAL VINES
<b>731</b>	Merlot	3	3309C	8x4	2.84	3869
<b>732</b>	Merlot	8	1103P	8x4	2.87	3901
<b>741 667</b>	Pinot Noir	667	3309C	8x4	.3	400
<b>741 777</b>	Pinot Noir	777	3309C	8x4	1.32	1800
<b>741 S</b>	Pinot Noir	"S" Heirloom Massal Selection	3309C	8x4	1.47	2000
<b>742 E</b>	Pinot Noir	"S" Heirloom Massal Selection	1103P	8x4	3	3955
<b>742 W</b>	Pinot Noir	"S" Heirloom Massal Selection	1103P	8x4	2.94	3938
<b>743</b>	Pinot Noir	Swan Heirloom Massal Selection	3309C	8x4	3.09	4200
<b>771</b>	Pinot Blanc	"RSR" Heirloom Massal Selection	5C	8x4	2.18	2970

**Reservoir:** Built in 1997. Capacity 20 acre-feet

# ROBERT SINSKEY VINEYARDS



## **Vandal Vineyard** (est. 1986)

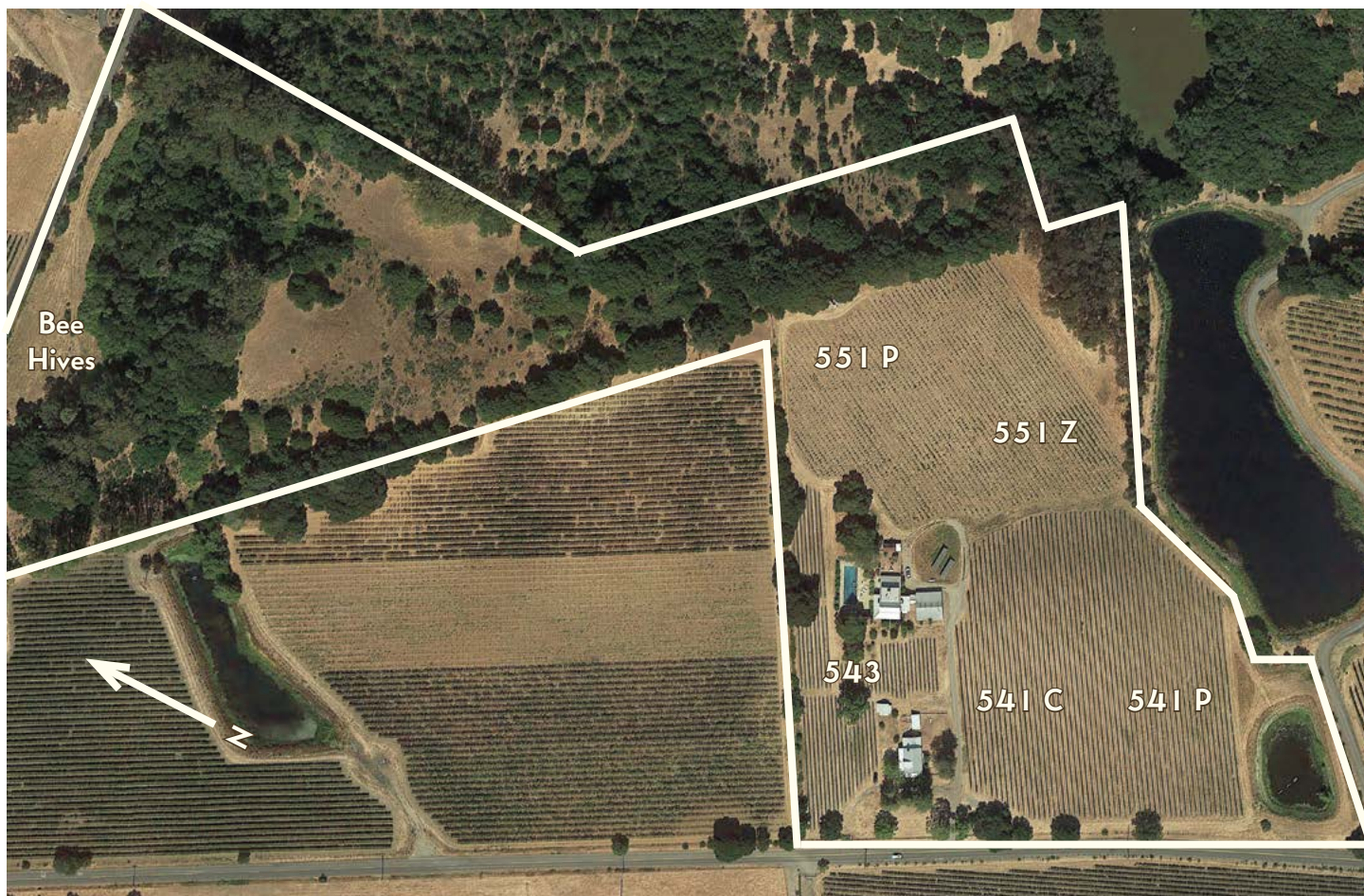
**Total Acreage: 73.28 Planted Acreage: 45.77**

The Vandal Vineyard straddles a ridge of land that rises out of upper Carneros to join the shoulder of Mt. Veeder. Removed a bit from the Bay, there's slightly more sun and protection from the wind than the lower Carneros, with clay loam and some red volcanic soils that are better drained.

PARCEL	VARIETY	CLONE/SELECTION	ROOTSTOCK	SPACING	ACRES	TOTAL VINES
<b>311</b>	Cabernet Franc	"JAG" Heirloom Massal Selection	5C	10x6	2.34	1701
<b>312</b>	Cabernet Franc	"JAG" Heirloom Massal Selection	5C	10x6	4.27	3100
<b>313U</b>	Cabernet Franc	214	101-14	10x6	2.25	1634
<b>313L</b>	Cabernet Franc	"JAG" Heirloom Massal Selection	5C	10x6	4.06	2949
<b>314</b>	Cabernet Franc	"JAG" Heirloom Massal Selection	5C	10x6	3.95	2866
<b>321U</b>	Cabernet Sauvignon	"SCH" Heirloom Massal Selection	5C	10x6	4.53	3291
<b>321M</b>	Cabernet Sauvignon	"SCH" Heirloom Massal Selection	5C	10x6	3.45	2504
<b>321L</b>	Cabernet Sauvignon	"SCH" Heirloom Massal Selection	5C	10x6	3.13	2275
<b>322</b>	Cabernet Sauvignon	169	1103P	8x5	3.00	3160
<b>333</b>	Merlot	3	5C	10x6	3.88	2816
<b>343</b>	Pinot Noir	943	1616C	8x5	3.08	3344
<b>342U</b>	Pinot Noir	Pommard UC12	5C	10x6	3.84	2787
<b>342L</b>	Pinot Noir	Pommard UC12	5C	10x6	3.38	2455
<b>351</b>	Zinfandel	SBM Selection	5C	10x6	.61	440

**Reservoir:** Built in 1991. Capacity 26 acre-feet

# ROBERT SINSKEY VINEYARDS



## Capa Vineyard (est. 1992)

Total Acreage: 27 Planted Acreage: 9.09

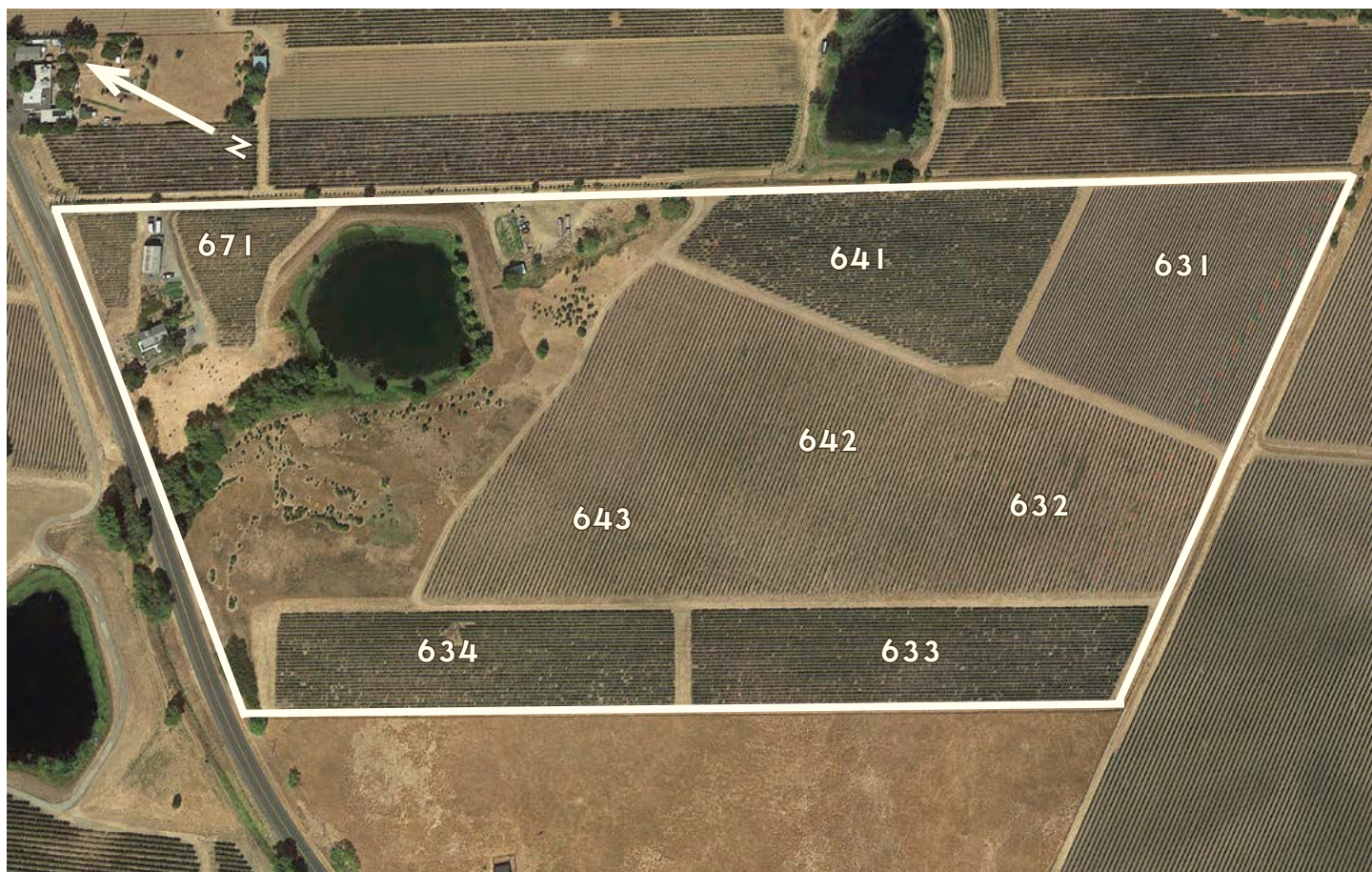
Capa was a dog. He lived most of his 16 years on the home vineyard we named in his honor. Comprised of clay loam soil, the vineyard's slope faces southwest with a perfect aspect to the afternoon summer sun, leading to fully ripe fruit that yields a balanced wine with well-developed tannins.

PARCEL	VARIETY	CLONE/SELECTION	ROOTSTOCK	SPACING	ACRES	TOTAL VINES
<b>541 C</b>	Pinot Noir	Pommard UCD 12	140 R	8x6	2.03	1840
<b>541 P</b>	Pinot Noir	Pommard UCD 12	101-14	8x6	2.24	2032
<b>551 P</b>	Primitivo	3	420 A	8x5	1.94	2106
<b>551 Z</b>	Zinfandel	Dupratt	1616 C	8x5	1.90	2075
<b>543</b>	Pinot Noir	Dijon 115	3309 C	6.5x3.3	.98	1987

**Reservoir:** Existing expanded in 1996. Capacity 4.1 acre-feet

RSV has an agreement with a local bee keeper who maintains bee hives on the unplanted part of Capa Vineyard on Congress Valley Road; in return, we get free pollination and tasty local honey!

# ROBERT SINSKEY VINEYARDS



## OSR Vineyard (est. 1996)

Total Acreage: 44.18 Planted Acreage: 27.6

A vineyard with clay loam soils off Old Sonoma Road in Los Carneros. OSR hosts 4 acres of unplanted hillside and a swale we are working to restore with native California vegetation. In the heart of Carneros, OSR produces some of our best cool climate Merlot.

PARCEL	VARIETY	CLONE/SELECTION	ROOTSTOCK	SPACING	ACRES	TOTAL VINES
<b>631</b>	Merlot	9	SO-4	6x4	4.48	8127
<b>632</b>	Merlot	181	110R	8x5	3.06	3333
<b>633</b>	Merlot	314	110R	6x4	2.99	5418
<b>634</b>	Merlot	314	110R	6x4	2.72	4928
<b>641</b>	Pinot Noir	Dijon 114	101-14	6x4	3.74	6788
<b>642</b>	Pinot Noir	Dijon 115	101-14	8x5	4.26	4635
<b>643</b>	Pinot Noir	UCD 4 Pommard	5BB	8x5	5.18	5643
<b>671</b>	Pinot Blanc	"RSR" Heirloom Massal Selection	5C	6x4	1.17	2119

**Reservoir:** Built in 1996. Capacity 30 acre-feet

# ROBERT SINSKEY VINEYARDS



## Scintilla Sonoma Vineyard (est. 2001)

Total Acreage: 51.56 Planted Acreage: 21.78

Just over the Napa County line and a stone's throw from the San Pablo Bay on the Sonoma side of the Carneros region, this vineyard is home to Alsatian varietals, the RSV Truffle Orchard and a flock of woolly sheep. Sheep have been grazing RSV's vineyards in the winter for many years. These living tractors mow the cover crop, reduce the use of fossil fuels, fertilize the soil and aid in frost control by keeping the cover crops low when the Diablo clay is too wet for tractors.

PARCEL	VARIETY	CLONE/SELECTION	ROOTSTOCK	SPACING	ACRES	TOTAL VINES
<b>943</b>	Pinot Noir	459	1103P	6x4	2.22	4028
<b>944</b>	Pinot Noir	777	3309C	6x4	3.32	6028
<b>991 G</b>	Gewürztraminer	ENTAV 47	3309C	6x4	1.41	2568
<b>991 R</b>	Riesling	1 Mosel	101-14	6x4	1.59	2885
<b>991 M</b>	Muscat	ENT a petits grains B	101-14	6x4	.29	534
<b>981 O</b>	Pinot Gris	Oregon 146	101-14	6x4	2.12	3854
<b>981 I</b>	Pinot Gris	INRA 52	5C	6x4	1.13	2056
<b>992 M</b>	Muscat	ENT a petits grains B	1616C	6x4	2.0	4347
<b>1071</b>	Pinot Blanc	ENTAV 54	101-14	6x4	3.03	5508
<b>1091 M</b>	Riesling	1 Mosel	101-14	6x4	1.69	3060
<b>1091 E</b>	Riesling	ENTAV 49	101-14	6x4	1.77	3216
<b>1020</b>	Périgord Winter Truffles				.46	88
<b>1021</b>	Burgundy Summer Truffles				1.2	475

**Reservoir:** Built in 2000. Capacity 35 acre-feet



# ROBERT SINSKEY VINEYARDS



## Capa Vineyard: Fruit Orchard

1 Nectarine	15 Apple - espaliered	29 Tangerine	43 Apple - Heritage
2 Peach	16 Cherry - English Morello Sour	30 Tangerine	44 Apple - Heritage
3 Bay Laurel	17 Plum	31 Kumquat - Marumi	45 Apple - White Pearmain
4 Orange - Blood	18 Apple	32 Lemon	46 Apple - Hauer Pippen
5 Apple	19 Fig	33 Lime - Yellow	47 Apple - Heritage
6 Pomegranate	20 Pear	34 Tangerine	48 Apple - Spitzenburg
7 Plum	21 Grapefruit - Ruby Red	35 Orange - Navel	49 Apple - Foxwhelp
8 Apple	22 Orange - Navel	36 Tangerine	50 Apple - Spitzenburg
9 Nectarine	23 Pear	37 Lemon - Meyer Improved	51 Cherry - Montmorency
10 Pear	24 Pear	38 Orange - Navel	52 Cherry - Montmorency
11 Persimmon	25 Pear	39 Tangerine	53 Cherry - Montmorency
12 Plum	26 Orange	40 Lemon - Pink Variegated Eureka	
13 Pear	27 Citrus	41 Kumquat - Marumi	
14 Peach	28 Tangerine	42 Orange - Navel	